

ACS ACTUATOR CONTROL SOLUTIONS

SERVO DRIVE AND MOTORS

STEPPER DRIVE AND MOTORS



EtherNet/IP™  Modbus

LINEAR SOLUTIONS MADE EASY

ACS – Actuator Control Solutions

WHAT IS THE ACS?

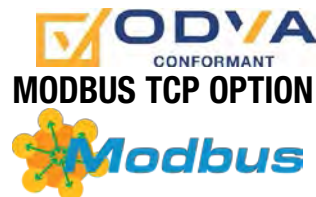
The ACS is an extremely easy-to-use servo or stepper drive & controller developed specifically to be used with electric actuators. Simply select the configured Tolomatic actuator in the software to automatically set-up most of the necessary parameters to create motion in the desired linear units (mm or inch).

BASIC CAPABILITIES:

- Operation Modes
 - » 4, 8, or 16 configurable move commands (absolute, incremental, jog, or home move types) with motion commanded via digital inputs.
 - » Analog input positioning mode (0-10Vdc or 4-20mA)
 - » Pneumatic mode replaces pneumatic valve operation for simple motion
 - » Modbus RTU over RS485 provides infinite positioning
- Adjustable motion profile parameters. Position, velocity, accel, decel, force parameters are Independently configurable for up to 16 moves.
- Force limiting
- Zone output based on position
- Configurable digital I/O (24Vdc Opto-Isolated, sourcing or sinking)
- Ability to reduce holding current for energy savings [Stepper]
- Compatible with most 24Vdc 2-phase stepper motors [Stepper]
- Brake output

ETHERNET/IP EtherNet/IP™ OPTION

- Infinite positioning with EtherNet/IP CIP I/O commands
- Dual port with internal switch for daisy chaining
- Analog output echoing actuator position
- ODVA Conformant



- Infinite positioning with Modbus TCP commands
- Dual port with internal switch for daisy chaining
- Analog output echoing actuator position

Motors

SERVO

- NEMA23 & NEMA34

STEPPER

- NEMA11, NEMA17, NEMA23 & NEMA34



ACS – Features

ETHERNET (OPTION)

Protocols:

- EtherNet/IP
- Modbus TCP

DUAL PURPOSE HEAT SINK

- Removes heat from drive for optimal performance
- Panel mounting

DIGITAL I/O

- 8 Digital Inputs
- 4 Digital Outputs
- 24 VDC Opto-Isolated
- Sourcing or Sinking
- Configurable Inputs

ANALOG I/O

- 0-10 VDC or 4-20mA
- 1 Analog Input
- 1 Analog Output (optional)

FEEDBACK

- For Digital Encoder

MOTOR POWER

Servo Drive	Stepper Drive
• 10-60VDC Servo Motors	• 10-52 VDC Stepper Motors
• 10 Arms Continuous / 20 Arms Peak	

BRAKE OUTPUT

- Active high/low

LED INDICATORS

- Motor Power & Fault indicators

COM PORT

- USB Com Port

RS485 COM PORT

- Modbus RTU (Base Model)

ACS POWER

Servo Drive	Stepper Drive
• 10 - 52 VDC Keep-alive Power	• 10-52 VDC
• 24 VDC Brake Power	• 10-52 VDC

EASY TO USE CONFIGURATION SOFTWARE

Windows® compliant

Digital I/O

Inputs	Outputs
1 Enable	1 Motion Complete
2 Start Motion	2 Home Complete
3 Home	3 Fault
4 E-Stop	4 Zone
5 Move Select 1 (MS1)	
6 Move Select 2 (MS2)	
7 Move Select 3 (MS3)	
8 Move Select 4 (MS4)	

Motion Profile

Position: 4.685 in
 Velocity: 1.00 in/sec
 Accel: 100.0 in/sec²
 Decel: 100.0 in/sec²
 Force: 100.0 %

Drive Status

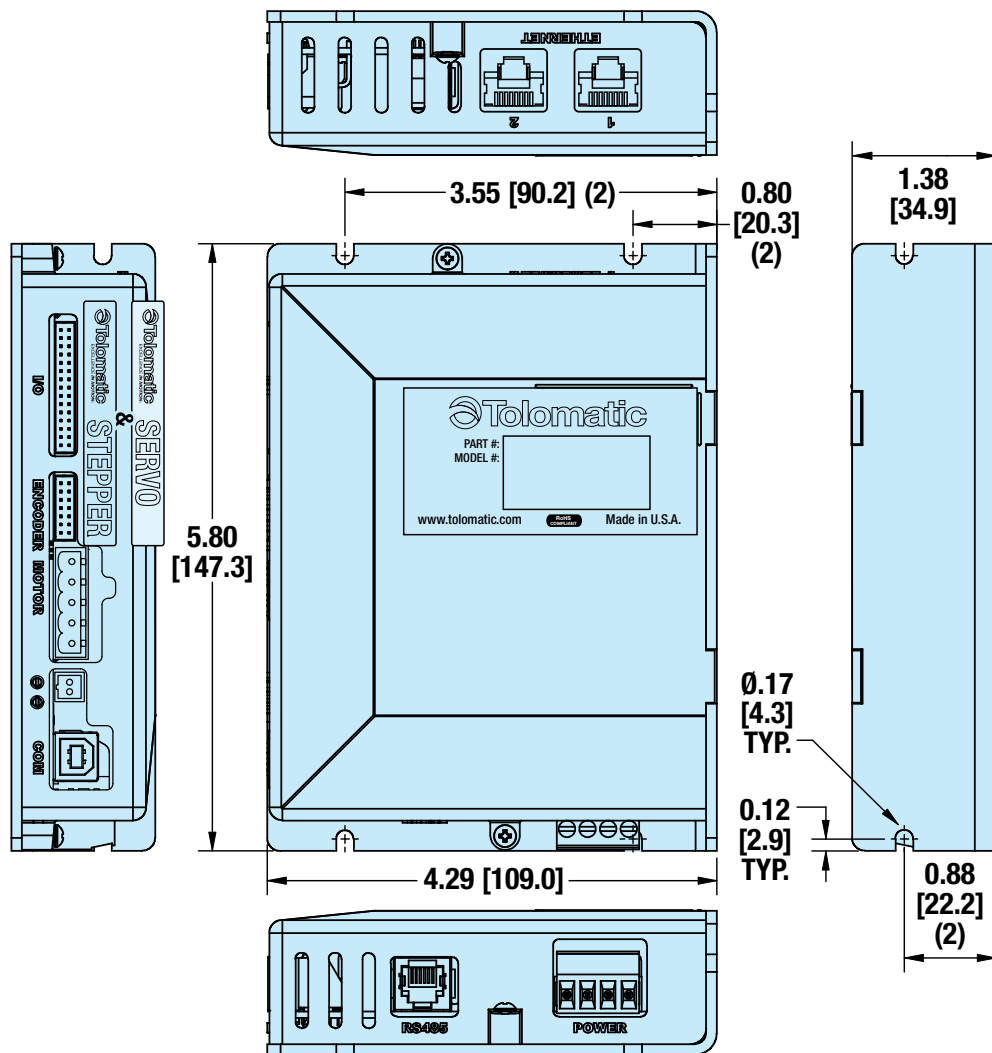
Drive Status	Safety Faults	Critical Faults
• Enabled	• Positive Limit Switch	• Feedback Error
• Homed	• Negative Limit Switch	• Over Current
• Motion Complete	• Software Stop	• Motor Over Temp
• Software Stop	• Position Error	• Drive Over Temp
• Hot in control		• Drive Over Voltage
		• Drive Under Voltage

ACS – Actuator Control Solutions



DIMENSIONS 3D CAD available at www.tolomatic.com

ACS SERVO & STEPPER DRIVE/CONTROLLER DIMENSIONS



ACS Specifications

SERVO

DRIVE POWER	
Current - Continuous (Max)	10A
Current - Peak (Max)	20A
Voltage Nominal	10V - 60V
Over Voltage	65V
Under Voltage	9V
Absolute Maximum Voltage	70V
Logic Current Draw (24V)	200 mA

See ACS Hardware and Installation Guide (Servo #3604-4181) for more details.

OPERATING CONDITIONS

Ambient Temperature	77°F, 25°C Nominal
Operating Temperature	32 - 104°F, 0 - 40°C
Storage Temperature	32-158°F, 0-70°C
Humidity	0 - 90% non-condensing

STEPPER

DRIVE POWER	
Current - Max	10 Arms
Voltage Nominal	10 - 52V
Over Voltage	55V
Under Voltage	9V
Absolute Maximum Voltage	60V
Logic Current Draw (24V)	200 mA

See ACS Hardware and Installation Guide (Stepper #3604-4183) for more details.

Servo Motors

MOTOR SPECIFICATIONS

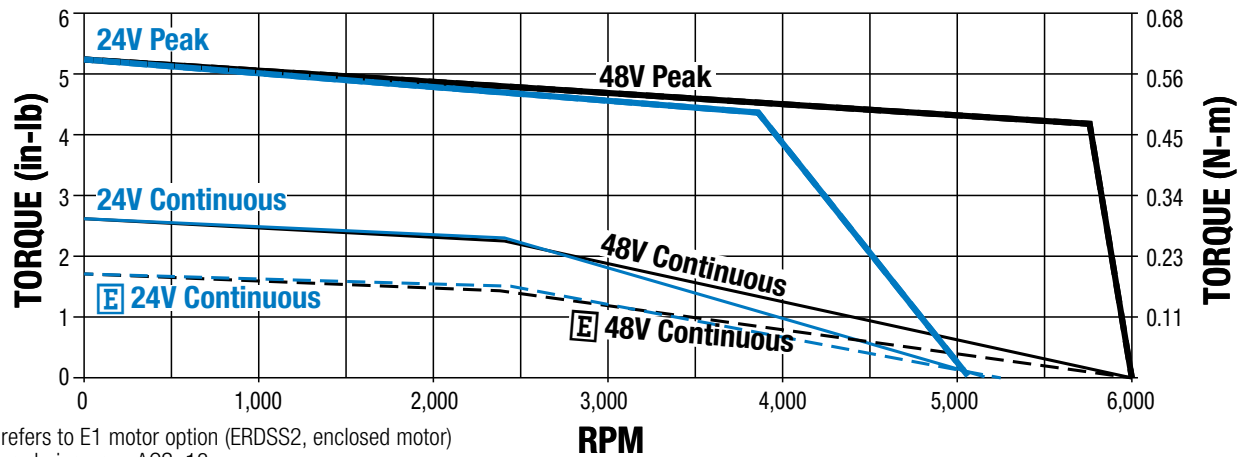
	NEMA 23			NEMA 34	
	AMV2C1A1	AMV2C2A1	AMV2C3A1	AMV2D1A1	AMV2D2A1
Continuous Torque	2.63 in-lbs	4.25 in-lbs	4.29 in-lbs	5.9 in-lbs	9.87 in-lbs
Peak Torque	5.25 in-lbs	8.5 in-lbs	13 in-lbs	11.9 in-lbs	21.46 in-lbs
Resistance	0.23 Ohms	0.205 Ohms	0.616 Ohms	0.250 Ohms	0.208 Ohms
Inductance	0.244 mH	0.305 mH	0.915 mH	0.325 mH	0.399 mH
Torque Constant (Kt)	4.824 oz-in/A	8.189 oz-in/A	14.189 oz-in/A	11.068 oz-in/A	18.243 oz-in/A
Back EMF Constant (Ke)	3.570 V/kRPM	6.06 V/kRPM	10.5 V/kRPM	8.190 V/kRPM	13.5 V/kRPM
Max. Continuous Current	10 Amps	10 Amps	3.5 Amps	10 Amps	10 Amps
Max. RPM	6,000 RPM	6,000 RPM	6,000 RPM	5,000 RPM	5,000 RPM
Rotor Inertia	0.001 oz-in-s ²	0.002 oz-in-s ²	0.002 oz-in-s ²	0.01 oz-in-s ²	0.02 oz-in-s ²
Motor Poles	8				
Max Case Temp	185°F (85°C)				
Encoder	Differential 500 lines/rev (2000 counts per rev)				

SIZING SOFTWARE
 AVAILABLE AT WWW.
 TOLOMATIC.COM
ACTUATOR

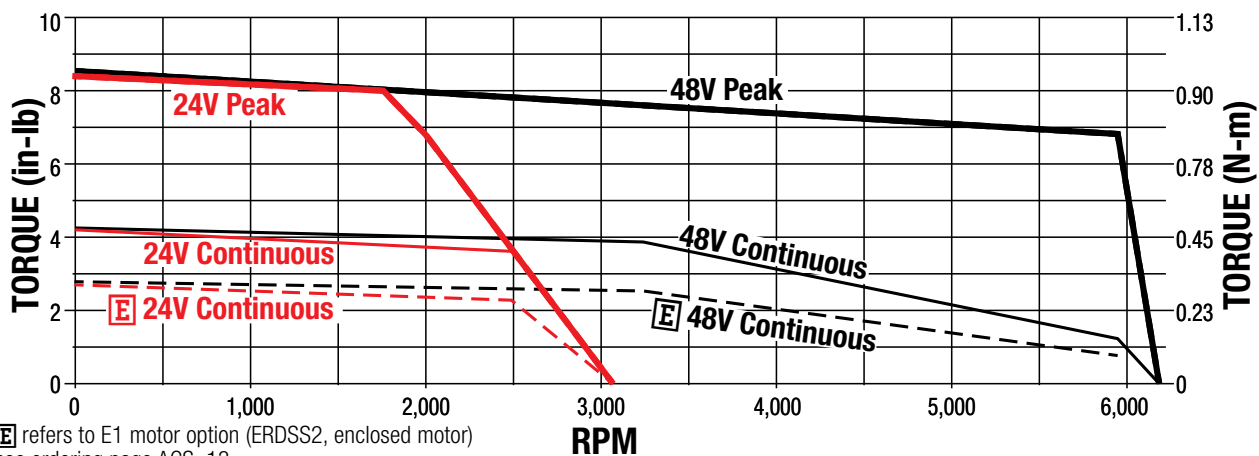
SIZING

PERFORMANCE DATA WITH ACS DRIVE/CONTROLLER

SPEED vs TORQUE - NEMA23 MOTOR, AMV2C1A1



SPEED vs TORQUE - NEMA23 MOTOR, AMV2C2A1

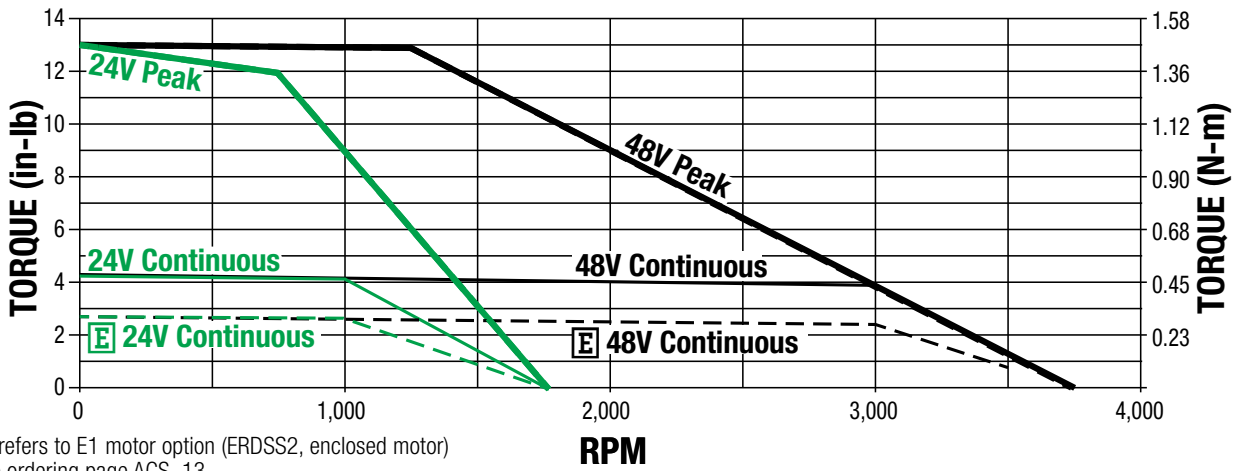


Servo Motors

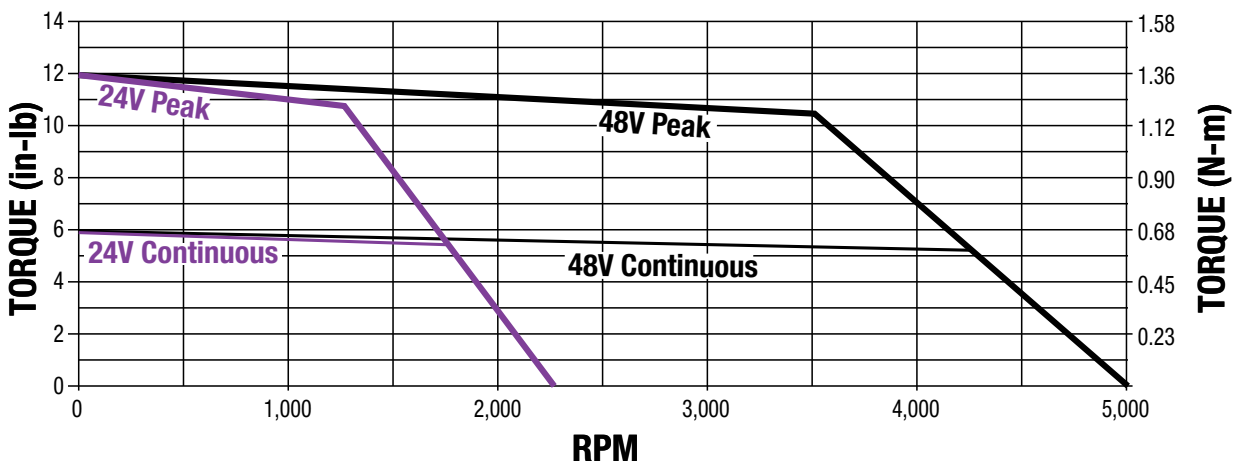
PERFORMANCE DATA WITH ACS DRIVE/CONTROLLER



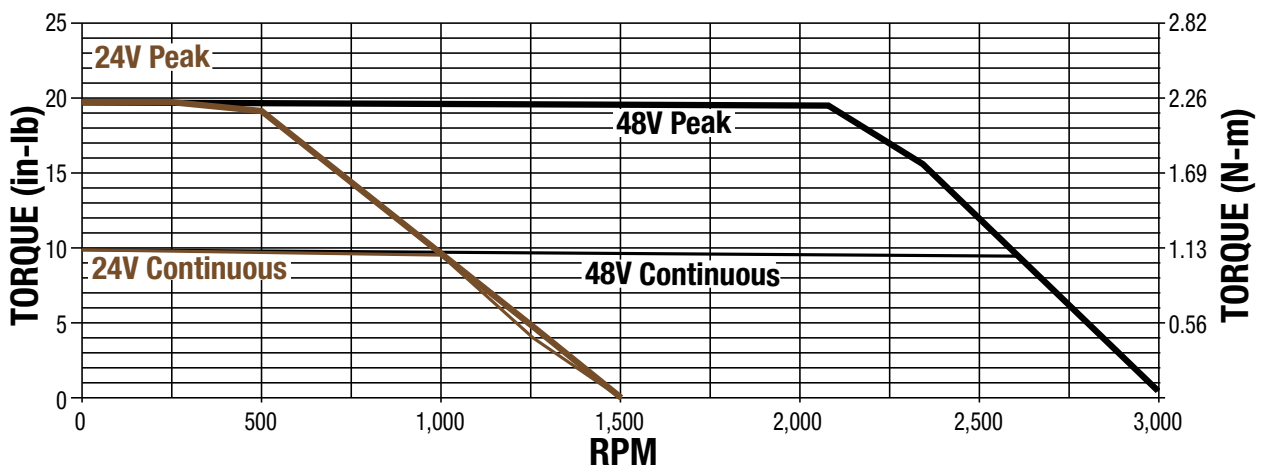
SPEED vs TORQUE - NEMA23 MOTOR, AMV2C3A1



SPEED vs TORQUE - NEMA34 MOTOR, AMV2D1A1



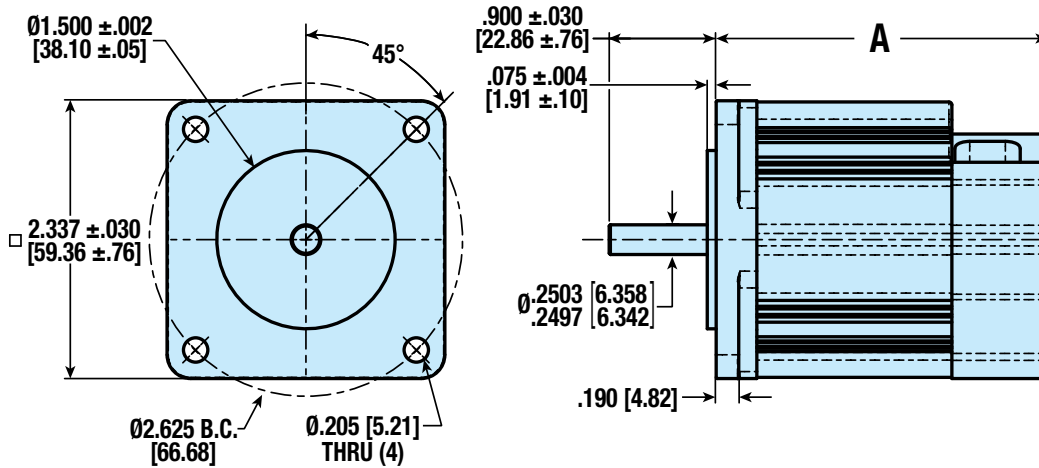
SPEED vs TORQUE - NEMA34 MOTOR, AMV2D2A1



Servo Motors

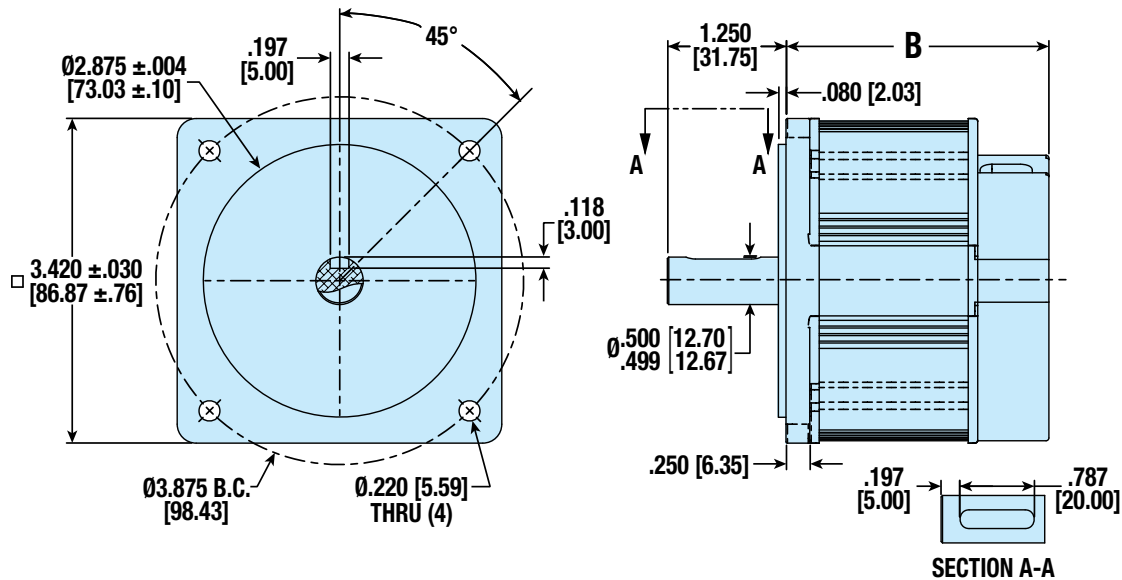
MOTOR DIMENSIONS  3D CAD available at www.tolomatic.com

NEMA23 DIMENSIONS



A
2.790" [70.87mm] ± 0.100" [2.54mm]
3.540" [89.92mm] ± 0.100" [2.54mm]
3.540" [89.92mm] ± 0.100" [2.54mm]

NEMA34 DIMENSIONS



B
2.770" [70.36mm] ± 0.100" [2.54mm]
3.510" [89.15mm] ± 0.100" [2.54mm]

Stepper Motors

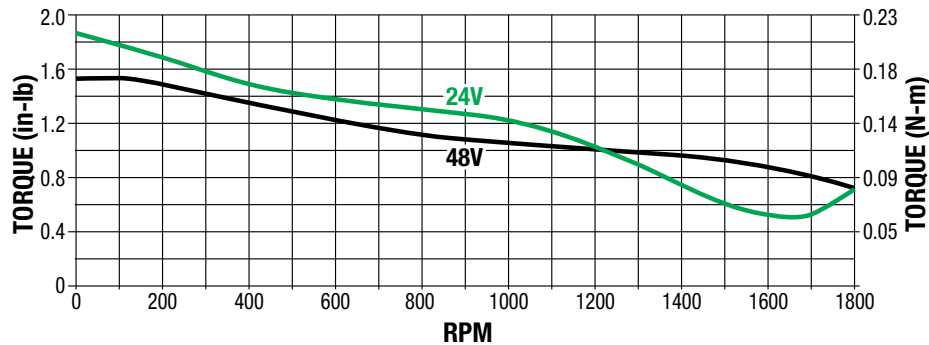


MOTOR SPECIFICATIONS

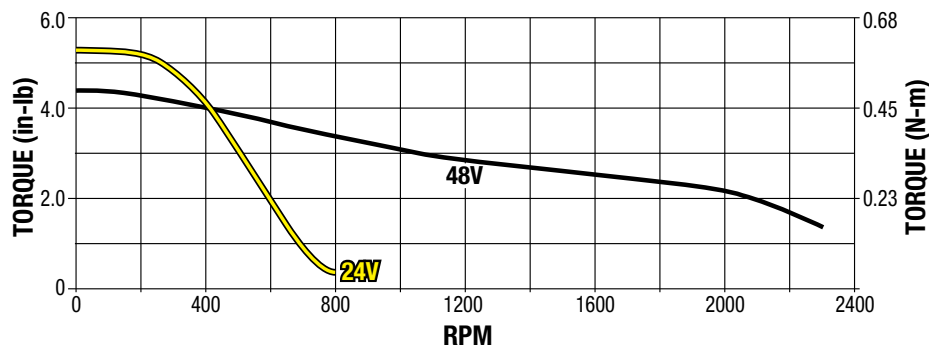
Specifications	Units	NEMA 11	NEMA 17	NEMA 23 1STK	NEMA 23 2STK	NEMA 34 1STK	NEMA 34 2STK
Resistance	(Ohms)	3.5	2.4	1.5	0.39	0.138	0.188
Inductance	(mH)	2.3	4.5	3.7	1.53	1.13	2
Rated Current (Amps-Peak/Phase)		1	1.5	2	5	10	10
Max. Torque	(in-lbs)	1.85	5.26	7.53	13.4	24.3	53
Maximum RPM		1800	2000	1200	2000	2000	1850
Degree per Step		1.8°	1.8°	1.8°	1.8°	1.8°	1.8°
Rotor Inertia	(lb-in ²)	0.006	0.028	0.075	0.133	0.324	0.546
Motor Type	Bipolar Stepper, 1.8° per Step						
Encoder	Differential; 500 line/rev (2000 count post quad)/rev						

PERFORMANCE DATA WITH ACS DRIVE/CONTROLLER

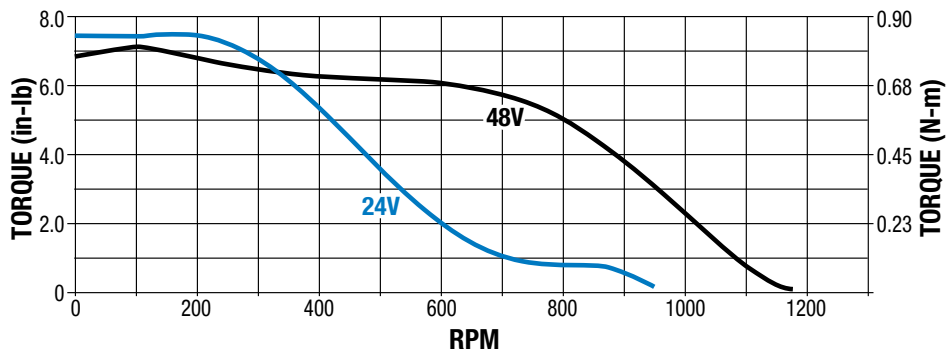
SPEED vs TORQUE - NEMA11 MOTOR - AMS1A1C1



SPEED vs TORQUE - NEMA17 MOTOR - AMS1B1C1



SPEED vs TORQUE - NEMA23 1 STACK MOTOR - AMS1C1C1

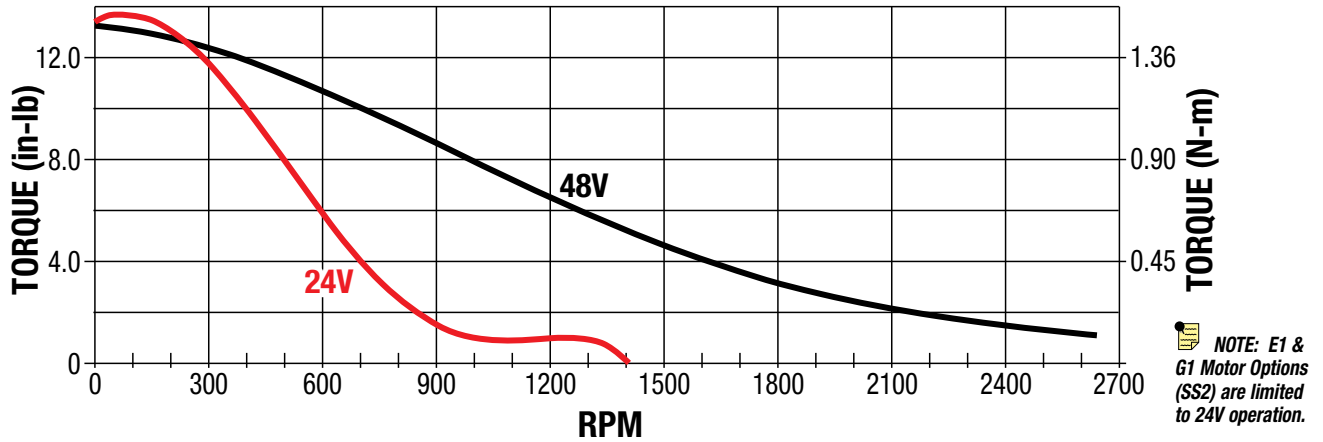


NOTE: E1 & G1 Motor Options (SS2) are limited to 24V operation.

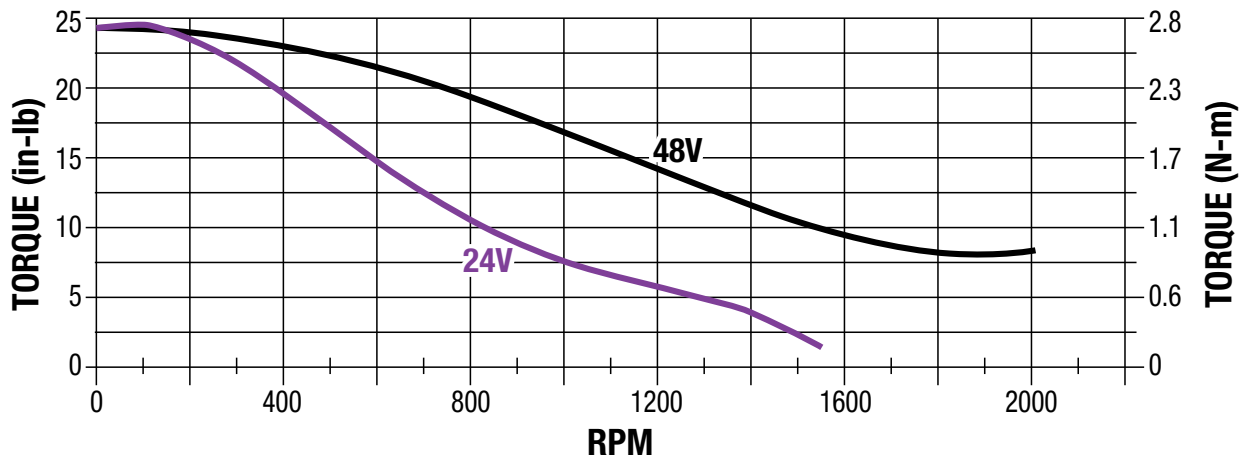
Stepper Motors

PERFORMANCE DATA WITH ACS DRIVE/CONTROLLER

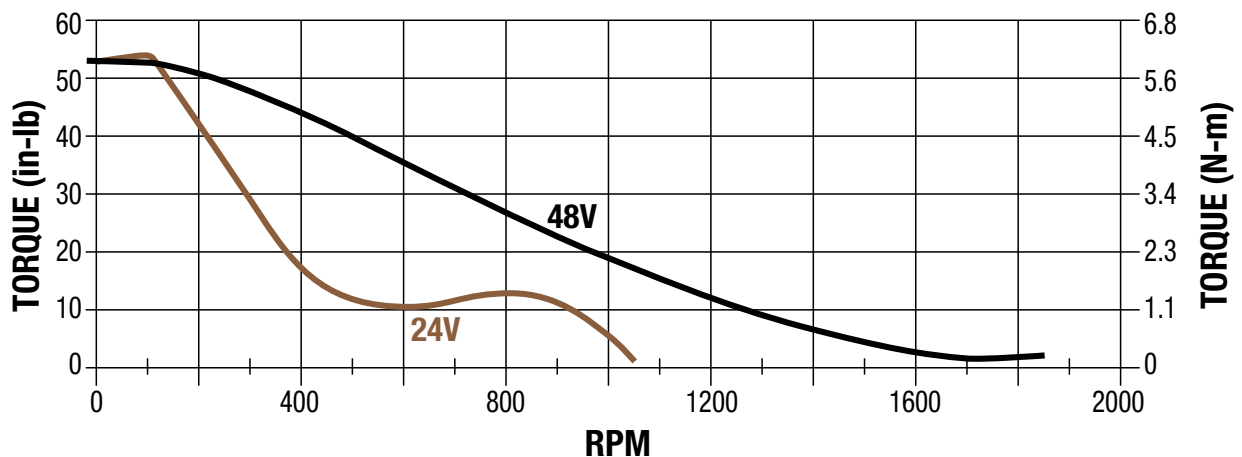
SPEED vs TORQUE - NEMA23 2 STACK MOTOR - AMS1C2C1



SPEED vs TORQUE - NEMA34 1 STACK MOTOR - AMS1D1C1



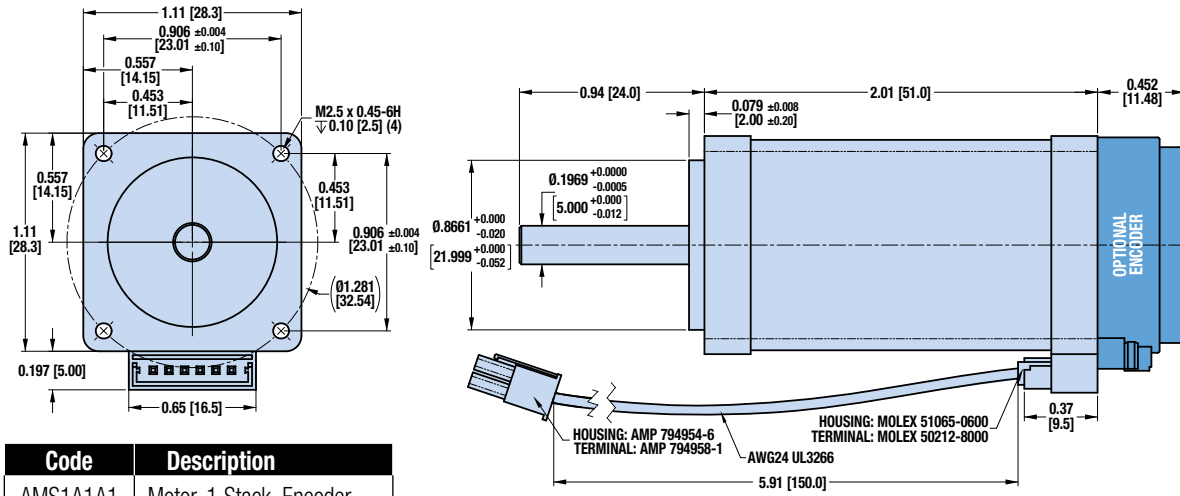
SPEED vs TORQUE - NEMA34 2 STACK MOTOR - AMS1D2C1



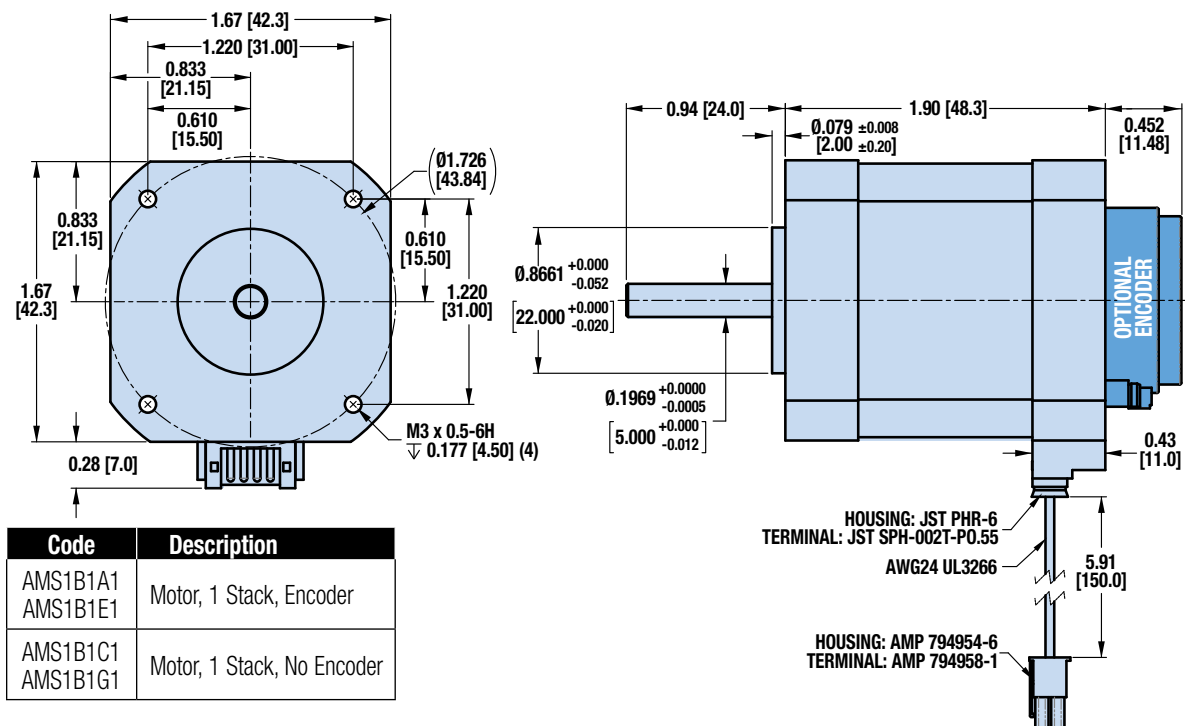
Stepper Motors

MOTOR DIMENSIONS  3D CAD available at www.tolomatic.com

NEMA11 DIMENSIONS



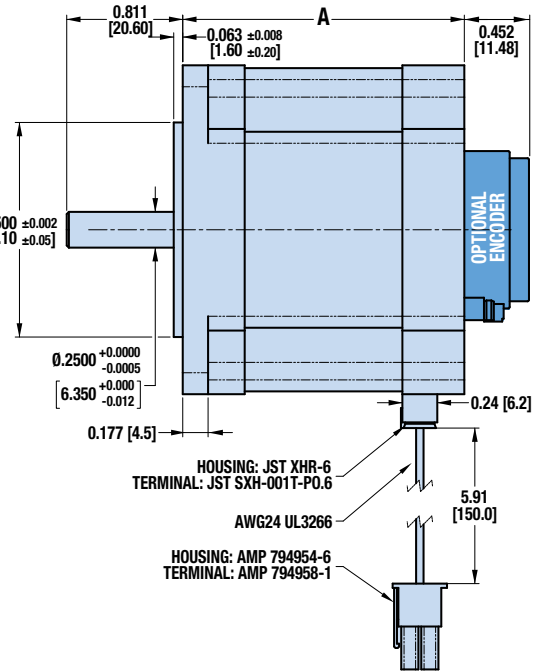
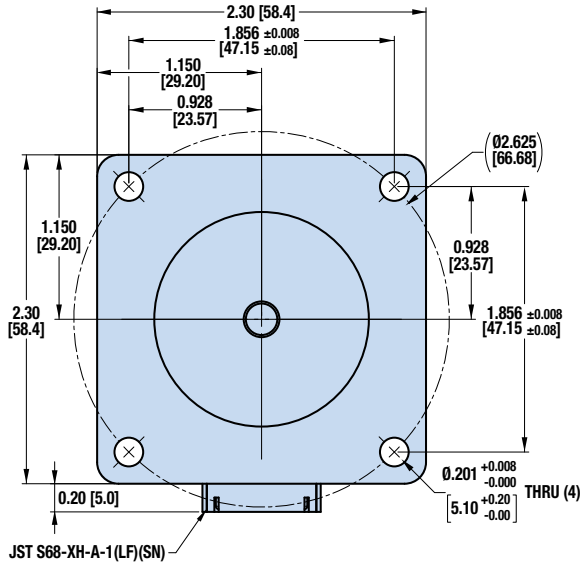
NEMA17 DIMENSIONS



Stepper Motors

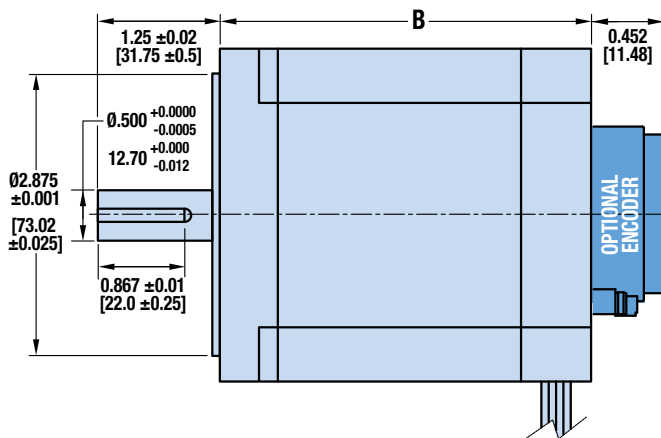
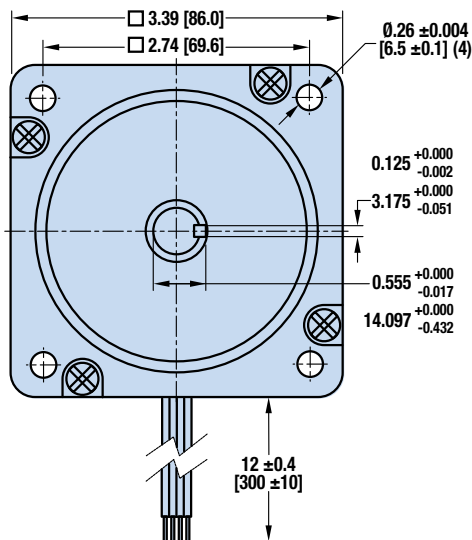
MOTOR DIMENSIONS  3D CAD available at www.tolomatic.com

NEMA23 DIMENSIONS



Code	Description	A
AMS1C1A1 AMS1C1E1	Motor, 1 Stack, Encoder	1.97 [50.0]
AMS1C1C1 AMS1C1G1	Motor, 1 Stack, No Encoder	
AMS1C2A1 AMS1C2E1	Motor, 2 Stack, Encoder	3.03 [77.0]
AMS1C2C1 AMS1C2G1	Motor, 2 Stack, No Encoder	

NEMA34 DIMENSIONS



Code	Description	B
AMS1D1A1	Motor, 1 Stack, Encoder	3.82 [97.0]
AMS1D1C1	Motor, 1 Stack, No Encoder	
AMS1D2A1	Motor, 2 Stack, Encoder	4.96 [126.0]
AMS1D2C1	Motor, 2 Stack, No Encoder	

Electronic Motor Brake

SPECIFICATIONS

The electronic motor brake is available in NEMA 23 & 34 frame sizes.

It fits on 23 & 34 frame stepper and servo motors see dimensional drawings to confirm shaft size and other dimensions.

The brake is recommended for vertical or inclined applications where there can be no backdrive during power off.

When 24 VDC is connected, the brake will be deactivated and the motor can turn freely. It is recommended to use the brake only as a holding brake and not as an emergency brake.

The Electronic Motor Brake comes with a 5m cable with M8 connector.



NEMA FRAME SIZE	HOLDING TORQUE	INPUT SHAFT DIA.	OUTPUT SHAFT DIA.	CONNECTION	CURRENT @24VDC	WEIGHT (W/O CABLE)	IP RATING
	in-lbs	inch	inch		Amp	lb	
	[Nm]	[mm]	[mm]			[kg]	
23	13.28	0.250	0.250	M8	0.45 Amp	0.99	IP55
	[1.5]	[6.35]	[6.35]			[0.45]	
34	15.05	0.500	0.500	M8	0.23 Amp	3.13	IP55
	[1.7]	[12.7]	[12.7]			[1.42]	

Recommended torque clamping Screw 2.5 ft-lbs [3.4 Nm]

Electronic Motor Brakes are primarily sold as part of a complete assembly including actuator and motor. Tolomatic will install and test the completed actuator, Electronic Motor Brake, and motor assembly before shipping. **Call Tolomatic if you wish to install an Electronic Motor Brake on an existing actuator.**

Contact Tolomatic for other motor mounting options.

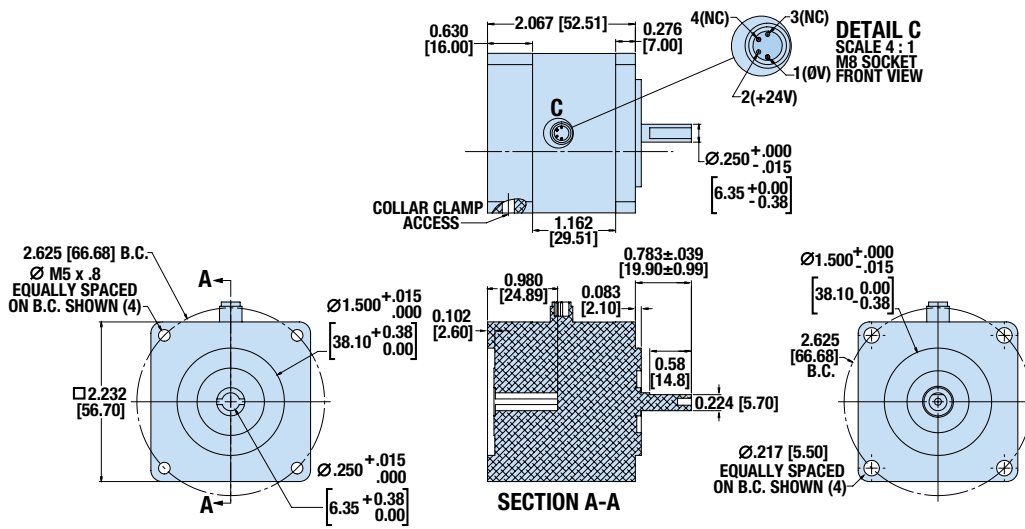
⚠ Tolomatic assumes no responsibility that an electronic motor brake will fit or perform with your motor or actuator if sold separately.)

Electronic Motor Brake

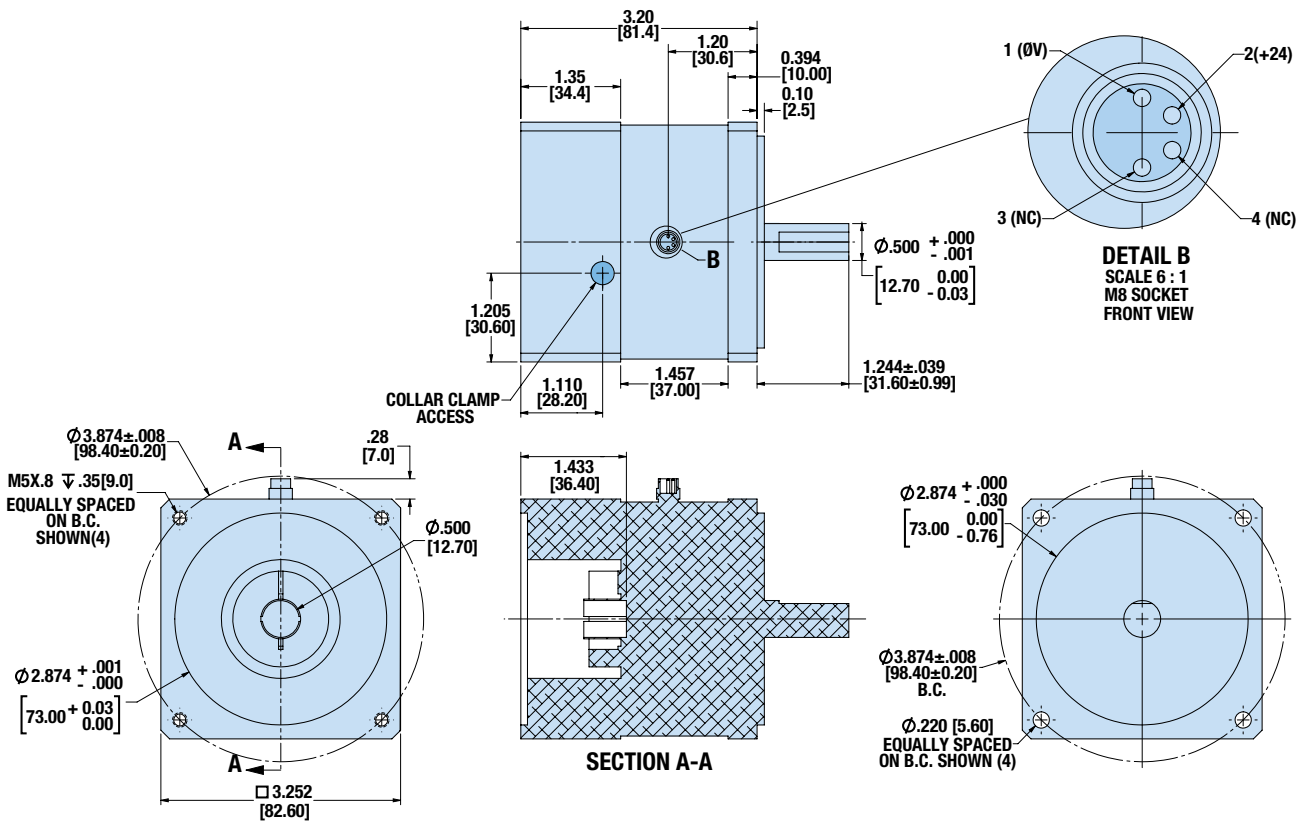
SIZE: ALL

DIMENSIONS  3D CAD available at www.tolomatic.com

NEMA23 DIMENSIONS



NEMA34 DIMENSIONS





ACS – Service Parts Ordering

ACS DRIVE/CONTROLLER, CABLES & MOTOR REPLACEMENT PARTS

SERVO MOTORS			
Code	Part No.	Frame Size	Description
AMV2C1A1	3604-1845	Nema 23	Motor, 1 Stack, Encoder, Winding B
AMV2C2A1	3604-1847	Nema 23	Motor, 2 Stack, Encoder, Winding B
AMV2C3A1	3604-1846	Nema 23	Motor, 2 Stack, Encoder, Winding A
AMV2D1A1	3604-1849	Nema 34	Motor, 1 Stack, Encoder, Winding B
AMV2D2A1	3604-1851	Nema 34	Motor, 2 Stack, Encoder, Winding B

STEPPER MOTORS			
Code	Part No.	Frame Size	Description
AMS1A1A1	3604-1780	Nema 11	Motor, 1 Stack, Encoder
AMS1A1C1	3604-1779	Nema 11	Motor, 1 Stack, No Encoder
AMS1B1A1 AMS1B1E1	3604-1776	Nema 17	Motor, 1 Stack, Encoder
AMS1B1C1 AMS1B1G1	3604-1775	Nema 17	Motor, 1 Stack, No Encoder
AMS1C1A1 AMS1C1E1	3604-1778	Nema 23	Motor, 1 Stack, Encoder
AMS1C1C1 AMS1C1G1	3604-1777	Nema 23	Motor, 1 Stack, No Encoder
AMS1C2A1 AMS1C2E1	3604-1955	Nema 23	Motor, 2 Stack, Encoder
AMS1C2C1 AMS1C2G1	3604-1954	Nema 23	Motor, 2 Stack, No Encoder
AMS1D1A1	3604-1957	Nema 34	Motor, 1 Stack, Encoder
AMS1D1C1	3604-1956	Nema 34	Motor, 1 Stack, No Encoder
AMS1D2A1	3604-1962	Nema 34	Motor, 2 Stack, Encoder
AMS1D2C1	3604-1961	Nema 34	Motor, 2 Stack, No Encoder

Servo
 **Servo-NOTE: Items 1,2,4,5 & 6 from table below are recommended for complete ACS system. Order items 1,2,4,5 & 6 by part numbers**

Stepper
 **Stepper-NOTE: All 6 items from table below are recommended for complete ACS system. Order items 1-6 by part numbers**

Part No.	Description
2190-1304	Input Power Connector

ACCESSORIES		
	Part No.	Description
1.	3604-9661	ACS Servo Drive/Controller (basic)
	3604-9662	ACS Servo Drive/Controller, EtherNet/IP (Analog Output)
	3604-9663	ACS Servo Drive/Controller, Modbus TCP (Analog Output)
1.	3604-9665	ACS Stepper Drive/Controller
	3604-9666	ACS Stepper Drive/Controller, EtherNet/IP (Analog Output)
	3604-9667	ACS Stepper Drive/Controller, Modbus TCP (Analog Output)
2.	3604-1842	Servo - Motor Power/Encoder Cable (3 m)
	3604-1843	Servo - Motor Power/Encoder Cable (5 m)
	3604-1943	Servo - Motor Power/Encoder Cable (10 m)
2.	3604-1708	Stepper - Motor Power Cable (3 m)
	3604-1709	Stepper - Motor Power Cable (5 m)
	3604-1710	Stepper - Motor Power Cable (10 m)

ACCESSORIES		
	Part No.	Description
3.	3604-1768	11,17,23 Stepper - Encoder Cable (3 meter length)
	3604-1769	11,17,23 Stepper - Encoder Cable (5 meter length)
	3604-1969	11,17,23 Stepper - Encoder Cable (10 meter length)
	3604-1971	34 Stepper - Encoder Cable (3 meter length)
	3604-1972	34 Stepper - Encoder Cable (5 meter length)
	3604-1973	34 Stepper - Encoder Cable (10 meter length)
4.	3604-1770	I/O Cable (3 meter length)
	3604-1771	I/O Cable (5 meter length)
	3604-1949	Replacement Brake Cable (5 meter length)
5.	3604-9526	Tolomatic Motion Interface CD
	3604-1852	Servo - USB Type B Cable
6.	2180-1163	Shunt Regulator 50W, 24-80 VDC

Servo Ordering

DRIVE

SV 20 48 UD CR53

SERVO ORDER CODE	
SV	Tolomatic ACS Servo Drive

CURRENT	
20	20 Amp

VOLTAGE	
48	48 / 24 Volts

DRIVE ORDER CODE	
UD	Standard/Basic Drive with ModBus RTU over RS485
ED	Standard/Basic Drive with EtherNet /IP
MD	Standard/Basic Drive with Modbus TCP

CABLE(S) ORDER CODE	
CR3 [_]	Cable(s) of 3m Length
CR5 [_]	Cable(s) of 5m Length
CR10 [_]	Cable(s) of 10m Length
[2]	Motor and Encoder Cables
[3]	Motor, Encoder and I/O Cables*
[5]	I/O Cables*

*I/O Cables are 3 meter length - for 5 meter I/O cable order via part number (3604-1771)

MOTOR

AM V2 C1 A1

MOTOR ORDER CODE	
AM	Tolomatic Motor

MOTOR TYPE	
V2	Servo Motor

FRAME SIZE	
C1	23 Frame Motor, 1 stack
C2	23 Frame Motor, 2 stack
C3	23 Frame Motor, 2 stack
D1	34 Frame Motor, 1 stack
D2	34 Frame Motor, 2 stack

MOTOR OPTIONS									
Code	Encoder	Gearhead	Brake	SS2	Code	Encoder	Gearhead	Brake	SS2
A1	Yes	-	-	-	B1	Yes	-	Yes	Yes
A2	Yes	5:1	-	-	B2	Yes	5:1	Yes	Yes
A3	Yes	10:1	-	-	B3	Yes	10:1	Yes	Yes
					E1	Yes	-	-	Yes

Stepper Ordering

DRIVE

ST 10 48 UD CR53

STEPPER ORDER CODE	
ST	Tolomatic ACS Stepper Drive

CURRENT	
10	Current

VOLTAGE	
48	Voltage

DRIVE ORDER CODE	
UD	Standard/Basic Drive with ModBus RTU over RS485
ED	Standard/Basic Drive with EtherNet /IP
MD	Standard/Basic Drive with Modbus TCP

CABLE(S) ORDER CODE	
CR3 [_]	Cable(s) of 3m Length
CR5 [_]	Cable(s) of 5m Length
CR10 [_]	Cable(s) of 10m Length
[1]	Motor Cable
[2]	Motor and Encoder Cables
[3]	Motor, Encoder and I/O Cables*
[4]	Motor and I/O Cables*
[5]	I/O Cables*

*I/O Cables are 3 meter length - for 5 meter I/O cable order via part number (3604-1771)

MOTOR

AM S1 B1 E1

MOTOR ORDER CODE	
AM	Tolomatic Motor

MOTOR TYPE	
S1	Stepper Motor

FRAME SIZE	
A1	11 Frame Motor
B1	17 Frame Motor
C1	23 Frame 1 Stack Motor
C2	23 Frame 2 Stack Motor
D1	34 Frame 1 Stack Motor
D2	34 Frame 2 Stack Motor

NOTE:
Gearhead and Brake available for 23 & 34 frame motors ONLY

MOTOR OPTIONS									
Code	Encoder	Gearhead	Brake	SS2	Code	Encoder	Gearhead	Brake	SS2
A1	Yes	-	-	-	C2	-	5:1	-	-
A2	Yes	5:1	-	-	C3	-	10:1	-	-
A3	Yes	10:1	-	-	D1	-	-	Yes	-
B1	Yes	-	Yes	-	D2	-	5:1	Yes	-
B2	Yes	5:1	Yes	-	D3	-	10:1	Yes	-
B3	Yes	10:1	Yes	-	E1	Yes	-	-	Yes
C1	-	-	-	-	G1	-	-	-	Yes

THE TOLOMATIC DIFFERENCE What you expect from the industry leader:



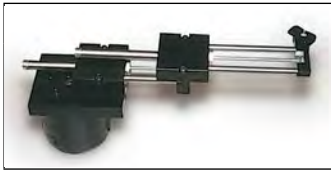
EXCELLENT CUSTOMER SERVICE & TECHNICAL SUPPORT

Our people make the difference! Expect prompt, courteous replies to all of your application and product questions.



INDUSTRY LEADING DELIVERIES

Tolomatic continues to offer the fastest delivery of standard catalog products. Modified and custom products ship weeks ahead of the competition.



INNOVATIVE PRODUCTS

From standard catalog products... to modified products... to completely unique custom products, Tolomatic designs and builds the best solutions for your challenging applications.



ONLINE SIZING & SELECTION SOFTWARE

Online sizing that is easy to use, accurate and always up-to-date. Input your application data and the software will determine a Tolomatic electric actuator to meet your requirements.



3D MODELS & 2D DRAWINGS AVAILABLE ON THE WEB

Easy to access CAD files are available in many popular formats.

ALSO CONSIDER THESE OTHER TOLOMATIC PRODUCTS:

PNEUMATIC PRODUCTS



RODLESS CYLINDERS: Band Cylinders, Cable Cylinders, MAGNETICALLY COUPLED CYLINDERS/SLIDES; GUIDED ROD CYLINDER SLIDES

"FOLDOUT" BROCHURE #9900-9075
PRODUCTS BROCHURE #9900-4028

ELECTRIC PRODUCTS



ROD & GUIDED ROD STYLE ACTUATORS, HIGH THRUST ACTUATORS, SCREW & BELT DRIVE RODLESS ACTUATORS, MOTORS, DRIVES AND CONTROLLERS

"FOLDOUT" BROCHURE #9900-9074
PRODUCTS BROCHURE #9900-4016

POWER TRANSMISSION PRODUCTS



GEARBOXES: Float-A-Shaft®, Slide-Rite®; DISC CONE CLUTCH; CALIPER DISC BRAKES

"FOLDOUT" BROCHURE #9900-9076
PRODUCTS BROCHURE #9900-4029



3800 County Road 116 • Hamel, MN 55340 U.S.A.
Phone: (763) 478-8000 • Fax: (763) 478-8080

Toll-Free: **1-800-328-2174**

Email: help@tolomatic.com • <http://www.tolomatic.com>

All brand and product names are trademarks or registered trademarks of their respective owners. Information in this document is believed accurate at time of printing. However, Tolomatic assumes no responsibility for its use or for any errors that may appear in this document. Tolomatic reserves the right to change the design or operation of the equipment described herein and any associated motion products without notice. Information in this document is subject to change without notice.

Visit www.tolomatic.com for the most up-to-date technical information

